

Envysion®



Smart Site Protection

November 8, 2023

Michael Rafoul - Senior Product Manager

Emily Tella - Marketing Events Manager

INTRODUCTION

INTRODUCTION

MICHAEL RAFOUL

Why we created Smart Site Protection:

- Leverage existing on-site security cameras to detect and alert on unscheduled activity within your business, without the requirement of additional equipment or costly installation.
- Envysion's AI-driven technology that detects and verifies threats or irregular after-hours activities to minimize unnecessary disruptions and reduce false alarm fees.
- Understand how to avoid late alarm night calls with Professional Monitoring.
- Learn how to manage end of day employee departures to control an employee setting off an alarm and labor costs for those lagging team members.

Have peace of mind knowing that your business is being protected, even when you're off the clock.



Mike Rafoul

Senior Product Manager

CSP0 / PMP

Smart Site Protection since
September 2021 inception

AGENDA



Overview



Product Demo



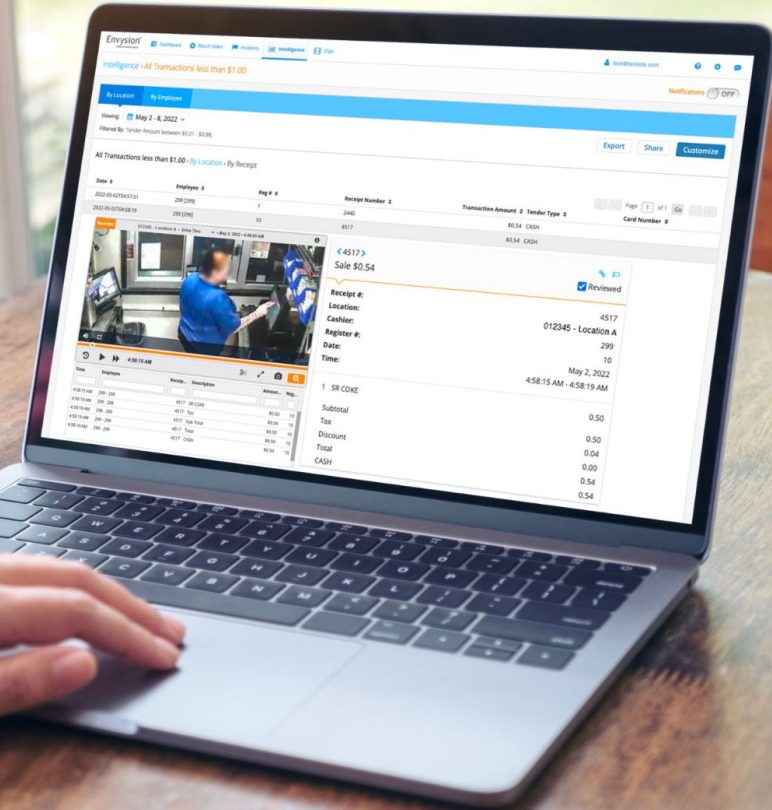
Self Monitoring



Roadmap / Upcoming Features



Q&A



SMART SITE PROTECTION OVERVIEW

ALARM SYSTEM PITFALLS (Hardware)

COSTLY HARDWARE

- Alarm intrusion systems can cost anywhere from \$2k to \$6k for hardware and installation
- Increase points of failure within your technology ecosystem requiring more service trips to handle equipment failures
- Additional integrations and/or equipment is required for Video Alarm Verification from traditional vendors



INEFFECTIVE TECHNOLOGY

- Burglars have learned techniques to beat traditional intrusion system. i.e. Break glass to avoid door contacts; crawling on floor to avoid motion sensors



ALARM SYSTEM PITFALLS (People)

ALARM CODE CHALLENGES

- High employee and vendor turnover necessitate frequent changes to security codes
- People typing in the wrong security code is the number one cause of false alarms
- Changes codes and cumbersome processes frustrate employees to the point they do not bother to arm the system when leaving



CONFIGURING AND MAINTAIN SYSTEMS

- Configuration of traditional alarm systems has to be done on-site and may require multiple tech visits.
- Maintaining alarm systems can be cumbersome and time consuming, leading to gaps in security

Read support page, Is live video supported, Is the firmware/device supported?

All of our [device support pages](#) list the level of support which a unit will support.

Firstly, ensure that live video is actually supported with the integration:

Features	
Cloud	
Integration	Features
Panasonic Puja	Live Video*
	PTZ
	Privacy
	Relay Control
	Audio Transmit (Larger)
	Post Alarm Recording*
	Escape
Device Features Glossary	

Next make sure the support firmware or device versions are listed as supported on the page:

	Device Features Glossary		How to Deploy System		
*This integration implements an FPS limitation on live and post alarm recording, this means that instead of using our normal device settings (DCF resolution and 4 FPS) this device requires 1 FPS to meet our CPU standards. This must be set on the Panasonic Device itself					
For a full list of Panasonic devices supported by this integration please click here					
Panasonic IPcam Models - PVS-400 V1 and Latest Firmware Versions					
Model Type	Model	Firmware	Device Type	Stream Format	Stream Mode
Options					
Full HD	WV-SF400, WV-SF400A	V1.30	2	1 or 3	0 or 1
Full HD	WV-SF400, WV-SF400A	V1.30	2	1 or 3	1 or 3
Full HD	WV-SF400, WV-SF400A	V1.30	2	1 or 3	0 or 1

ALARM SYSTEM PITFALLS (Outcomes)

FALSE ALARMS FEES

- False alarms fees rack up costing companies from a few \$1k to \$100k per year
- 95% of alarm events are false and dispatch could have been prevented
- Emergency services are being overburdened responding to false alarms and not being able to respond to true emergencies faster



MISSED ALARMS

- Poorly configured systems, or systems not armed to begin with, lead to missed burglaries
- Employees can feel unsafe working at certain locations causing them to seek employment elsewhere, creating a shortage of qualified workers



The Solution

Redefine security with **Smart Site Protection (SSP)**. Envysion capitalizes on AI-driven technology to detect potential after-hours threats, minimize disruptions, reduce false alarm fees, without the need for alarm panels and sensors to protect your stores.

Utilize Existing Cameras



Leverage Smart Site Protection's powerful security software to turn your existing on-site cameras into an AI-enabled smart device. No additional equipment is required.

Person Detection AI



Cloud analytic technology analyzes motion-based video and filters out only the activity containing people, vastly eliminating the false positive alerts that plague similar motion-only video solutions

Simple Configuration and Schedule Driven Activation

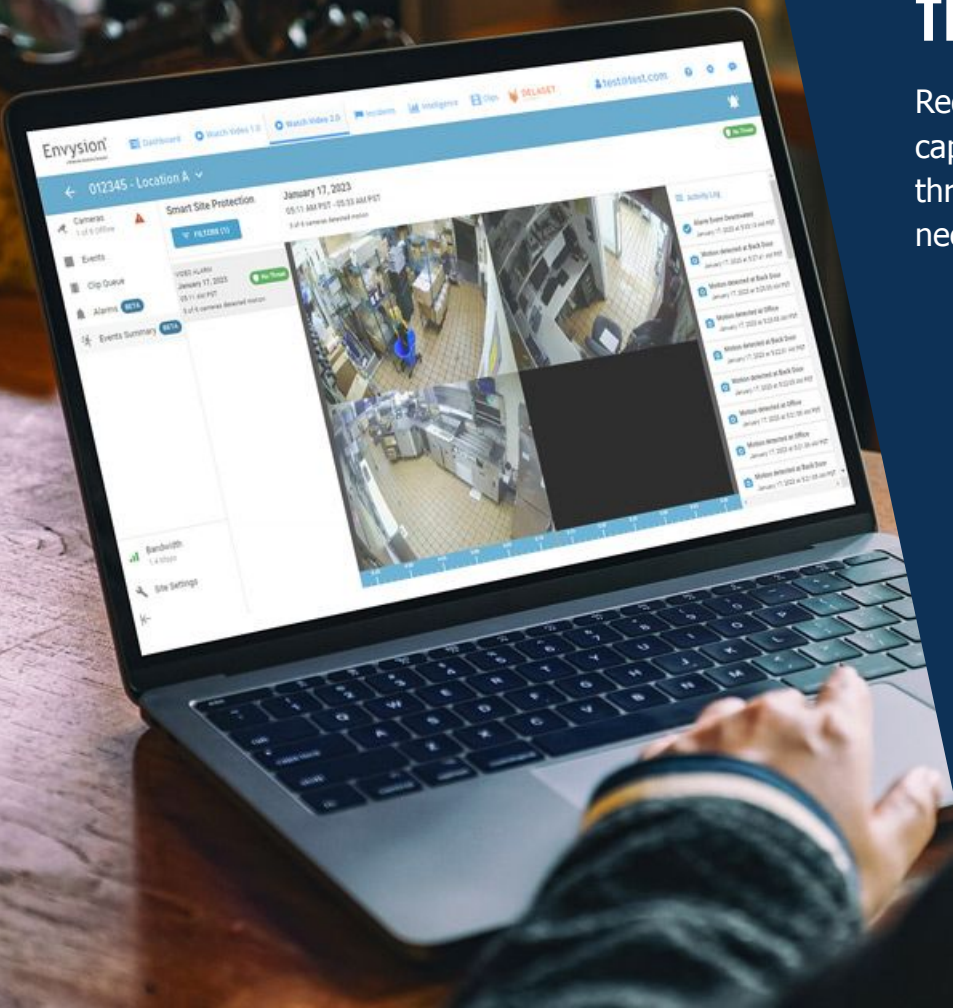


System is armed based on site-level schedules of your choosing, with cameras and notifications enabled to provide you optimal coverage and notify the right people for each location

Professional Monitoring



Because ~95% of all alarm events are driven by loosely scheduled business-related activity, our professional monitoring team filters out all the trivial false alarm events and only sends you the important ones.



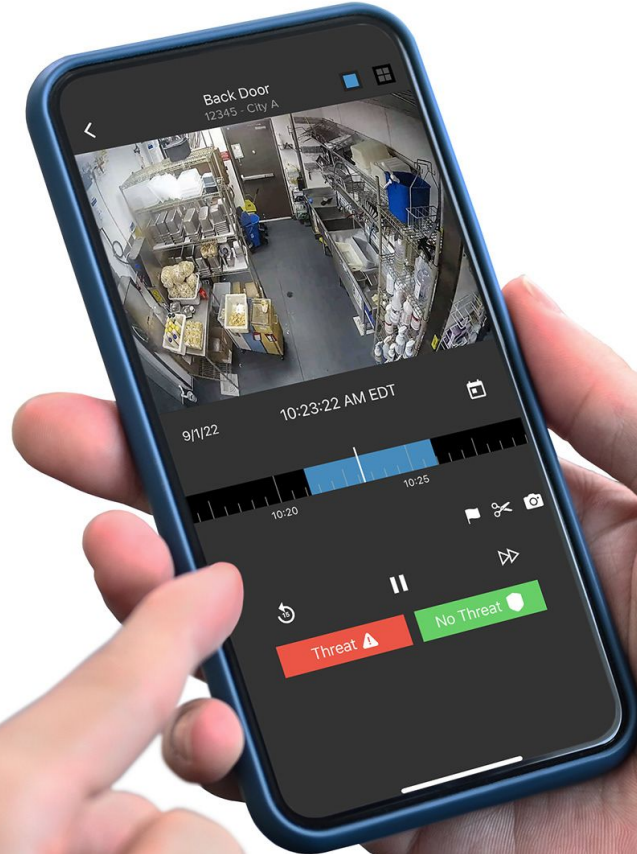
DEMO



SMART SITE PROTECTION PROFESSIONAL MONITORING

- Non-threat responses immediately snooze the system and prevent unnecessary overnight interruptions
- Any suspicious activity triggers a chain of phone calls and SMS messages to your staff to confirm threats
- Agents are standing by to dispatch police once the threat is verified or if employees can not be reached
- Complete activity logs available in the application for tracking and audit

SMART SITE PROTECTION SELF-MONITORING



- Protect key areas of your store with an intuitive and easily configurable analytic tool
- Mobile or email alerts notify users of all after hours activity
- Dismiss and snooze your alarm system with one click
- Easy to use scheduling tools

SMART SITE PROTECTION ROADMAP

SECURITY INSIGHTS

● Problem

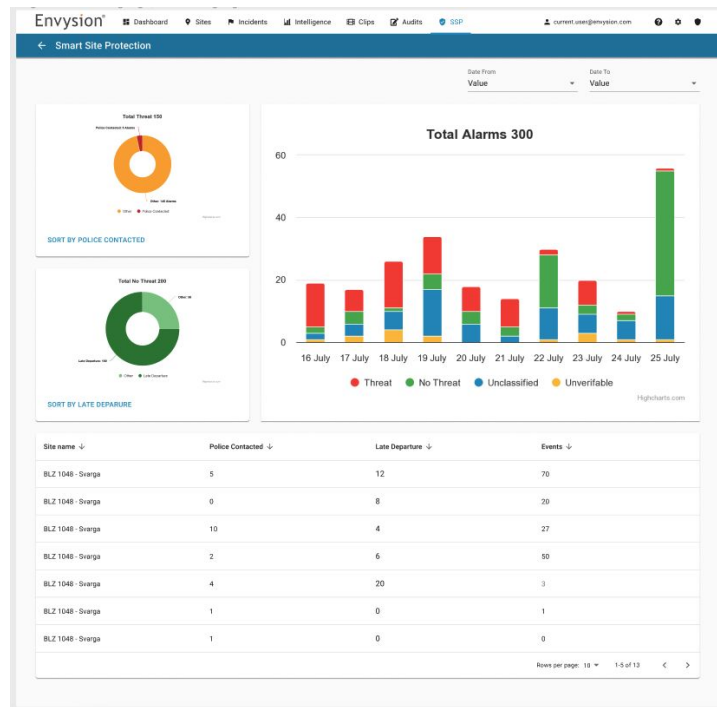
- Risk Managers that oversee large areas or districts don't have immediate visibility into police dispatches or a good way to quickly understand their alarm event trends, until the invoice arrives in the mail

● Solution

- Create a landing page for SSP users and admins to quickly identify trends and escalations across sites

● Key Features

- Alarm event trending
- Breakdown of Yes and No threats
- Site list with metadata breakdown
- Time range selector



* Mockup - Design is subject to change

PANIC BUTTON SUPPORT

- Problem

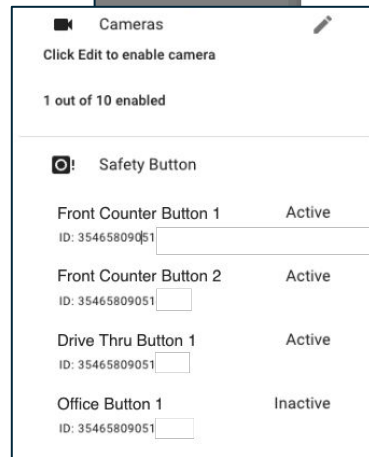
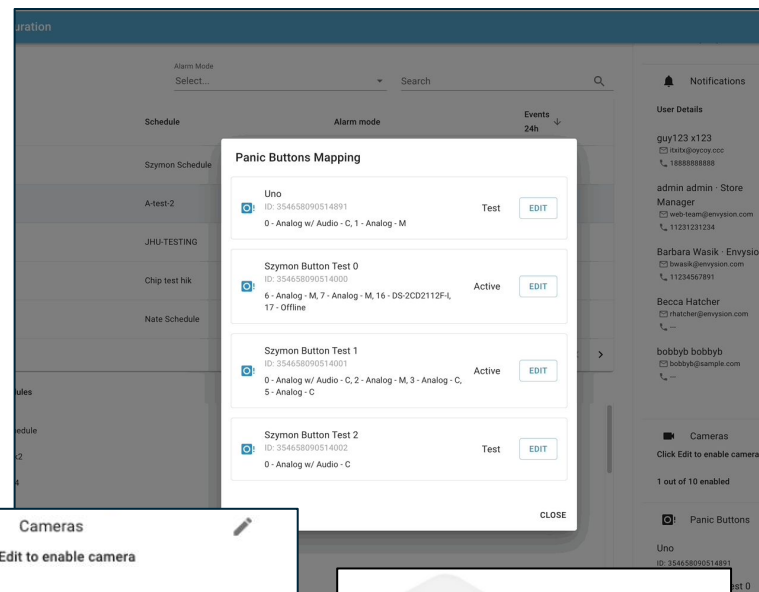
- At some locations, employees need access to a panic button solution to immediately dispatch police or emergency medical help in the event of robbery or customer escalation.

- Solution

- Envysion provides an wireless LTE IOT device that can signal our alarm monitoring partners for immediate police dispatch any time of day

- Key Features

- Wireless buttons are easy to install and mount
- LTE solution means panic functionality is available independent of store Internet connection
- Effectively unlimited number of buttons per site
- Cameras can be mapped to each button
- External input available for auxiliary connections



SIREN SUPPORT

- Problem
 - Traditional intrusion alarm system support the use of a siren and other audio outputs to be used as deterrents in an alarm event.
- Solution
 - Add support for a networked audio device to provide an audible deterrent to intrusion
- Key Features
 - Direct integration to EnVR
 - Automatic triggering in the event of a yes-threat from either self- or professional-monitoring workflows
 - Remote activation/deactivation



QUESTIONS

THANK YOU